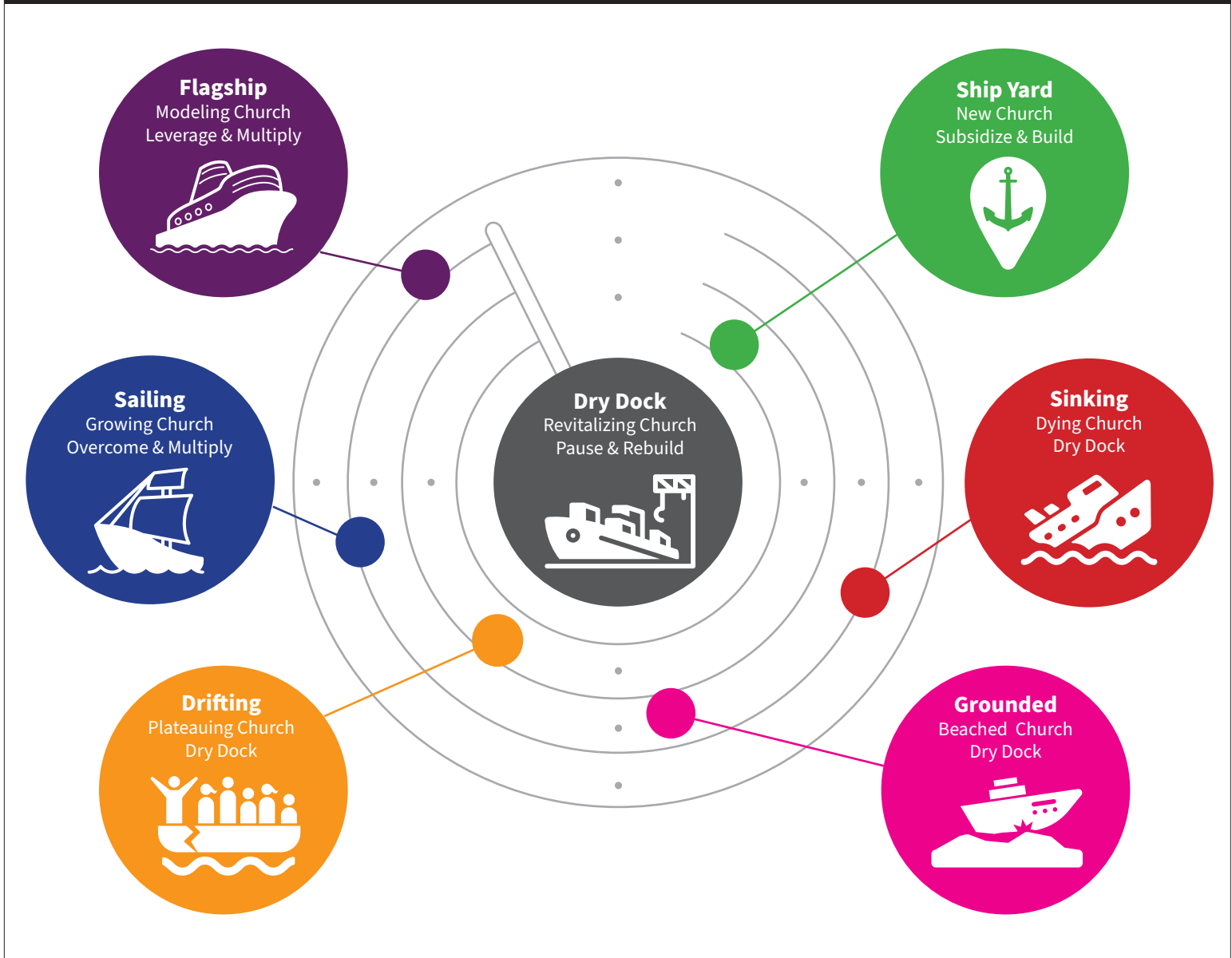




# FLEET TRACKER



Signs	Strategies
<p><b>Shipyard</b></p>  <p>New churches still getting established, in the prelaunch and first years. As evidenced by:</p> <ul style="list-style-type: none"> <li>• Assessed leader</li> <li>• Articulated strategy</li> <li>• Assigned coach</li> </ul>	<p>Subsidize: Help them access the people, expertise, and resources they need.</p>
<p><b>Dry Dock</b></p>  <p>Existing churches undergoing revitalization by virtue of new leadership and/or an intentional process. As evidenced by:</p> <ul style="list-style-type: none"> <li>• Assessed leader</li> <li>• Articulated strategy</li> <li>• Assigned coach</li> </ul>	<p>Support: Help them with strategy, new pastoral leadership, coaching, congregational culture change, enhanced disciple-making pathway/pipeline (contextual gauges, lead/lag measures), volunteer leadership development, and targeted financial investments.</p>

## Signs

## Strategies

### Sinking



Hemorrhaging people and money, demise is imminent.  
As evidenced by:

- Viability: Unviable in the short term (1-5 years)
- Attendance: Below critical mass
- Finances: Unable to pay pastor fairly and meet budget
- Conversions/Baptisms: No clear pattern year over year
- Disciple Making: Negligible intentional pathway/pipeline

Salute: Celebrate their history, help them die with dignity, and reinvest their remaining assets.

### Grounded



On a clear downward trajectory, damage is serious, may be unrepairable.  
As evidenced by:

- Viability: Unviable in the midterm (5-15 years)
- Attendance: Slow but consistent decline
- Finances: Able to pay pastor and bills, but minimal funds available for ministries
- Conversions/Baptisms: Sporadic/inconsistent year over year
- Disciple Making: Minimal intentional pathway/pipeline

Salvage: New leadership, merger, voluntary dry dock or reclassify to developing status for dry dock. Adoption, strategic closure and reinvestment.

### Drifting



Mostly level or slow decline with occasional (almost accidental) seasons of progress.  
As evidenced by:

- Viability: Unviable in the long term (15 years+)
- Attendance: Very slow decline or plateaued
- Finances: Able to pay pastor and bills, with moderate funds available for ministries
- Conversions/Baptisms: Semi-consistent but not in keeping with the size and potential of the church
- Disciple Making: Moderate intentional pathway/pipeline

Steer: New leadership, dry dock, adoption.

### Sailing



Moving forward consistently and being effectively.  
As evidenced by:

- Viability: Fully viable
- Attendance: Regular significant growth year after year
- Finances: Able to pay pastors and bills, and has adequate money for ministry
- Conversions/Baptisms: Consistent year over year
- Disciple Making: Significant intentional pathway/pipeline

Strengthen: Help them overcome growth barriers, access expertise, and remove obstacles. Encourage them to consider ways to be engaged in multiplication.

### Flagship



“Sailing” at a level where they could be a significant help to other churches.  
As evidenced by:

- Viability: Vibrant and fully ready to reproduce
- Attendance: Consistent and at times dramatic growth
- Finances: Able to pay pastors and bills, and invests heavily in ministry
- Conversions/Baptisms: Significant numbers year after year in keeping with the size and potential of the church
- Disciple Making: Effective intentional pathway/pipeline

Seize: Leverage their experience and expertise to help other churches (especially churches in dry dock), give them sinking and grounded churches to adopt, engage them in developing new pastoral leaders, encourage them to take a lead role in planting new churches and sites.